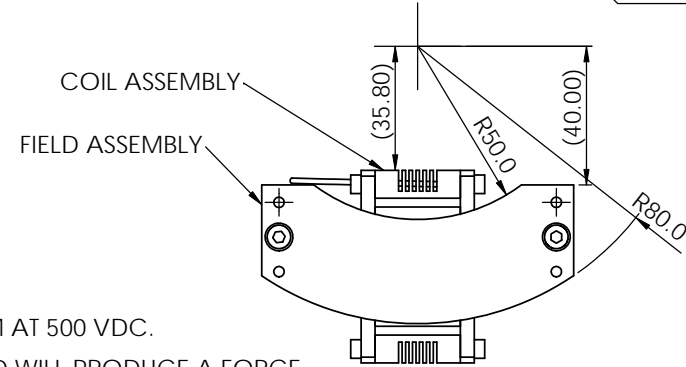
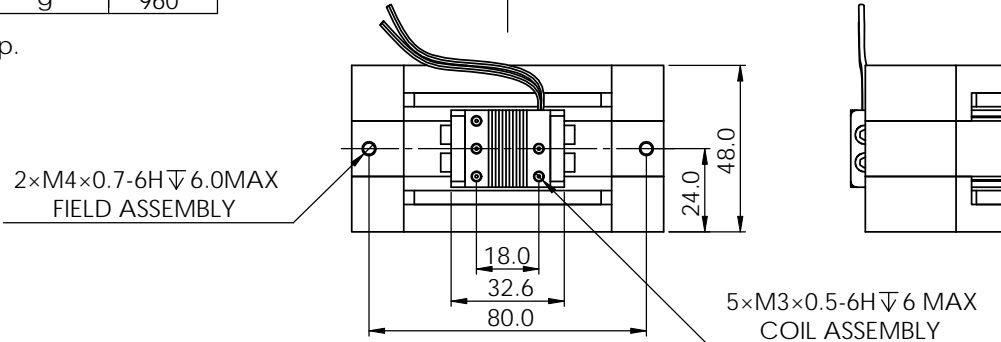
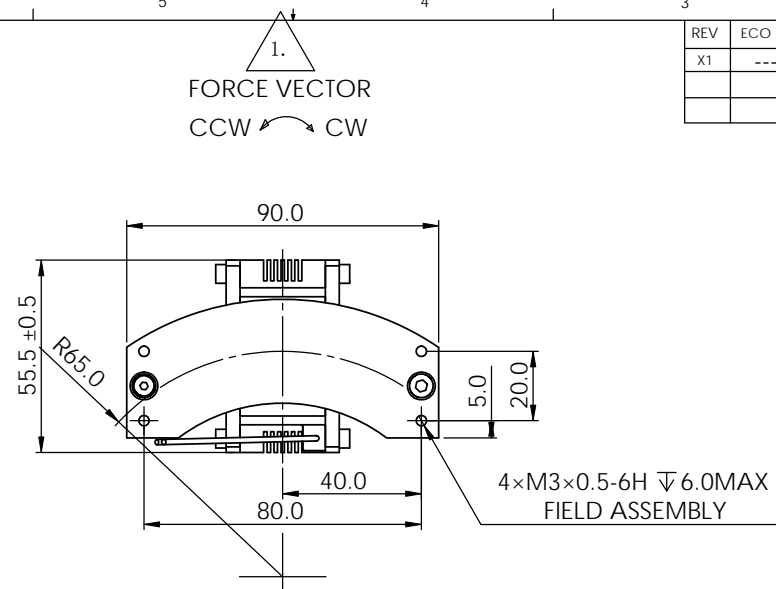
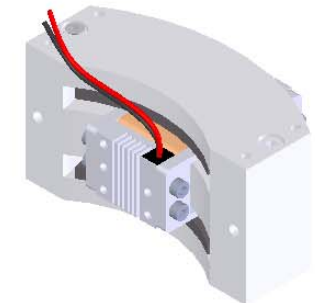


WINDING CONSTANT	TOL	SYM	UNITS	VALUE
DC RESISTANCE@25C	+ 10%	R	OHMS	3.7
VOLTAGE @ Fp	NOMINAL	Vp	VOLTS	14.5
CURRENT @ Fp	NOMINAL	Ip	AMPS	3.9
TORQUE SENSITIVITY	+ 10%	Kt	N-m / A	0.4
BACK EMF CONSTANT	NOMINAL	Kb	V/Rad/Sec	0.4
INDUCTANCE	+ 30%	L	mH	1.1
ACTUATOR PARAMETER	SYM	UNITS	VALUE	
PEAK TORQUE *	Tp	N-m	1.5	
CONTINUOUS STALL TORQUE **	Tcs	N-m	0.7	
ACTUATOR CONSTANT	Ka	N-m / w	0.2	
ELECT TIME CONSTANT	Te	milli-sec	0.3	
POWER I2R@Fp	Pp	W	57.6	
TOTAL STROKE(ANGULAR)	S	degree	30	
CLEARANCE ON SIDE OF COIL	CL	mm	1.0	
THERMAL RESISTANCE ***	qth	C / W	10	
MAX WINDING TEMP	Tmax	C	155	
WEIGHT OF COIL ASSEMBLY	WTc	g	80	
INERTIA OF COIL ASSEMBLY	Jc	g-cm2	3300	
WEIGHT OF FIELD ASSEMBLY	WTF	g	880	
WEIGHT OF ACTUATOR	WTA	g	960	

* 10 sec @ 25C ambient, 155C coil temp.
 ** 25C ambient, 150C coil temp.
 *** In free air.



REV	ECO NO.	DESCRIPTION	DRN	APP'D	Q.A	DATE
X1	---	INITIAL RELEASE	LHM	SGM		2011-05-26



LEAD WIRE: RED
300 LONG MIN

LEAD WIRE: BLACK
300 LONG MIN

2. INSULATION RESISTANCE: 100 MEGOHMS MINIMUM AT 500 VDC.

▲ A POSITIVE (+) VOLTAGE APPLIED TO THE RED LEAD WILL PRODUCE A FORCE ON THE COIL ASSEMBLY IN CLOCKWISE (CW) DIRECTION.

NOTES: UNLESS OTHERWISE SPECIFIED

UNLESS OTHERWISE SPECIFIED:		NAME	DATE	
DIMENSIONS ARE IN MM		LHM	2010-11-22	
TOLERANCES:		CHECKED		TITLE: <h1>VOICE COIL ACTUATOR</h1>
ANGULAR: MACH ±0° 30'		ENG APPR.	SGM 2010-11-22	
ONE PLACE DECIMAL ±0.25		MFG APPR.		
TWO PLACE DECIMAL ±0.1		Q.A.		
INTERPRET GEOMETRIC TOLERANCING PER:		COMMENTS:		SIZE B
ANSI Y14.5M-1982.				DWG. NO. RA15-030-00A
				REV X1
DO NOT SCALE DRAWING				SCALE: 1:1.5 SHEET 1 OF 1